



Eatout Norfolk

your mini-guide to eating out in Norfolk!



Issue 27 - Summer 2023



Historic family run pub in the beautiful market town of Reepham.
 Atmospheric, spacious, dog friendly, open fire, log burners, children's menu.
 Outside courtyard and table tennis.
 Stocking local award winning wine, (Winbirri), Mr Winters bottled beer,
 Woodforde's cider, local gins including Whatahoot, Home Farm, St. Giles, Bullards.
 Plus local whiskeys and rums. Regular music events to suit all tastes.
 Quiz nights and specialty nights.
01603 870345 www.kingsarmsreepham.com



BAR OPENING HOURS

Mon – CLOSED
 Tues–Thurs 12-3pm &
 5:30-10.30pm
 Fri 12-3pm & 5.30–11pm
 Sat 12–11pm
 Sun 12-6/8pm

BAR FOOD & RESTAURANT HOURS

Tuesday to Thursday 12-2.30pm
 5.30pm - 9pm
 Friday 12-2.30pm, 5.30 - 9pm
 Saturday 12-9.30pm
 Sunday 12-3.30pm

Market Place, Reepham, Norfolk, NR10 4JJ

Introduction

Hello and welcome to the Summer edition of *Eat Out Norfolk*, where we share and celebrate all that is wonderful about the Norfolk food and drink scene - and a little more as well.

I have been editor of the small but perfectly formed *Eat Out Norfolk* guide for a number of years now and I am so very proud of the relationship we have built with both our readers and the pubs, cafes, restaurants and delis that appear in our pages.

We strive to tell the story of Norfolk's food, drink and wider heritage in a lively and informal style that leaves readers feeling they know the county just that little bit better.

While the team at *Eat Out Norfolk* are really conscious that much of the information we provide can also be found online – including our own eatoutnorfolk.co.uk website – we also believe that there is something really nice about reading through a paper-based guide such as ours. So, whether you are reading this online or via the magazine, we hope you enjoy our journey through the eating establishments of Norfolk as much as we always do.

Whether you are a resident seeking out new eating destinations, a returning visitor seeking to rediscover the county or a complete newcomer, do enjoy meeting the Norfolk food heroes who star within these pages and do support them by visiting their establishments, trying their produce and telling your friends and family about the local food scene in this beautiful county.

Best wishes for a wonderful summer in Norfolk.

Rosie

Please could you mention our guide when making a reservation with any of our featured establishments, or leave a testimonial on our website www.eatoutnorfolk.co.uk

Contents

| Contents | Page |
|--------------------|------|
| Directory Map | 4 |
| Mini Directory | 4-10 |
| Broadland | 4-5 |
| Great Yarmouth | 5 |
| Mid Norfolk | 5 |
| North Norfolk | 5-6 |
| North West Norfolk | 6-8 |
| Norwich | 8 |
| South Norfolk | 8-10 |



Contributors:

Sales: Rosie Dorrell
sales@eatoutnorfolk.co.uk

Magazine produced by:

Creative Beat Marketing and Design
 Tel: 01263 738899
www.creativebeatmarketing.co.uk

Printed by Barnwell Print, Aylsham
 Tel: 01263 732767
www.barnwellprint.co.uk



By using Carbon Balanced Paper through the World Land Trust on this publication we have offset 150kg of Carbon & preserved 29sqm of critically threatened tropical forests.

Carbon Balanced Paper. One of the most sustainable forms of communication that will reduce your carbon footprint and promote CSR. www.carbonbalancedpaper.com

Mini Directory

Broadland

The Chequers *Hainford*
Nestled in the Norfolk countryside, a country pub through & through, you'll find exposed beams, stone floors and open fires. Focused on creating great experiences whether your with us for a quick drink or dining from our fresh, seasonal & local menu.
10 Stratton Road, Hainford, Norwich NR10 3AY
t: 01603 559599

The Crown Inn *Catfield*
An unspoilt traditional village pub in a Broadland village. Real ales and home cooked food, we also have 2 self catering holiday cottages.
The Street, Catfield, Great Yarmouth NR29 5AA
t: 01692 580128

The Fox *Hevingham*
We offer family friendly dining, steakhouse style where Sam and the team of chefs offer up a great choice of locally sourced flame grilled steaks, fish and vegetarian options along with some contemporary and classic dishes.
Cromer Road, Hevingham NR10 5LY
t: 01603 755362

The Fox *Lyng*
Serious about food and drink, The Fox features a wide range of Real Ales and fine wines, together with a tasty menu formed from the best local produce.
The Street, Lyng NR9 5AL
t: 01603 872316

Gate of India *Aylsham*
Fully Licensed Restaurant & Takeaway specialising in: Vegetarian - Tandoori - Balti and all sorts of Curry Dishes.
14 Market Place, Aylsham NR11 6EH
t: 01263 734743

The Kings Arms *Reepham*
The Kings Arms is a friendly family run 17th Century Coaching Inn situated in Reepham's historic Market Place, their extensive menu offers home cooked food, and all produce is sourced locally.
Market Place, Reepham, Norfolk NR10 4JJ
t: 01603 870345

The Kings Head *Coltishall*
Recently taken over and refurbished, we are situated on the river bank in the heart of the Norfolk Broads. Open 7 days a week offering food, rooms and also a garden with a river view.
Coltishall Common, Wroxham Road NR12 7EA
t: 01603 737426

The New Forge *Aylsham*
The large restaurant area is popular with families, groups and couples seven days a week and the feature bar is stocked with real ales, beers, wines and spirits.
Norwich Road, Aylsham, NR11 6UD
t: 01603 737531

The Norfolk Mead *Coltishall*
A tranquil country house hotel with lots of individual touches and an attentive, but never intrusive, service.
Church Loke, Coltishall NR12 7DN
t: 01603 737531

The Old Rectory *Croftwick*
Set within rural Norfolk, the Old Rectory Hotel is the perfect location for a short break, business trip or relaxing holiday. A family run business that takes pride in offering a personal and friendly service.
North Walsham Road, Croftwick, Norwich NR12 7BG
t: 01603 738513

The Recruiting Sergeant *Horstead*
Is an award-winning traditional pub and restaurant with rooms, situated in the village of Horstead near Coltishall in Norfolk. The food in the restaurant is prepared from quality produce, sourced locally whenever possible, and used in season to get the best results.
Norwich Road, Horstead, Norwich NR12 7EE
t: 01603 737077

Rose & Crown *Frettenham*
A traditional family friendly free house local pub in the quaint village of Frettenham. Cask conditioned real ales, beautiful beer garden and coffee shop.
50 Buxton Road, Frettenham, Norwich NR12 7NJ
t: 01603 898341

The White Horse Inn *Neatishead*
We have a range of drinks driven by quality rather than quantity. We believe in sourcing the best possible produce to offer choice and value for money.
The Street, Neatishead NR12 8AD
t: 01692 630828

The White Horse *Upton*
A traditional family and dog-friendly country pub, with a great selection of real ales, home cooked food and a large beer garden. Owned by the community since 2012.
Chapel Road, Upton, Norwich NR13 6BT
t: 01493 750696

Great Yarmouth

The Boathouse *Ormesby St. Michael*
Open 7 days per week serving fine local pub food and gastro specials. Lovingly restored in 2014 to blend with the natural landscape, a real treasure.
Eels Foot Road, Ormesby St Michael NR29 3LP
t: 01493 730342

Filby Bridge *Filby*
Overlooking Filby & Little Ormesby Broad, a superb a la Carte restaurant with a wide range of fresh fish & steak dishes. Lunches and coffees served.
Main Road, Filby NR29 3AA
t: 01493 368142

Jay Jay's Café *Gorleston*
At the heart of the community, this friendly venue and unique location provides a relaxing haven, and always something new on the special board.
Lower Esplanade, Gorleston-on-Sea, NR31 6BT
t: 01493 657001

Lion Inn *Thurne*
Welcome to The Lion at Thurne, gin palace and real ale Mecca on the Norfolk Broads. We allow dogs in all of the bar areas all of the time but not in our restaurant area.
The Street, Thurne NR29 3AP
t: 01692 671806

Reedham Ferry Inn *Reedham*
Regardless of whether it's lunch or supper, our seasonal menus, well-kept local ales and extraordinary atmosphere are yours to enjoy. We recommend booking!
The Broads, Ferry Road, Reedham NR13 3HA
t: 01493 700429

The Waterside *Rollesby*
Our fabulous dining experience is complemented by a range of fun things to see and do with a putting green, wildlife hide and seasonal boating/fishing available.
Main Road, Rollesby NR29 5EF
t: 01493 740531

Mid-Norfolk

The Lodge *North Tuddenham*
An ideal destination to enjoy a fabulous lunch or evening meal. Relax in our friendly environment and indulge yourself with a meal from our quality menu.
Main Road, North Tuddenham NR20 3DJ
t: 01362 638466

The World's End *Mulbarton*
A real local pub, serving delicious, home cooked food that will tantalize your taste buds, from snacks, and starters to homemade meals. You rest assured of a warm welcome.
Norwich Road, Mulbarton NR14 8JT
t: 01508 570205

Steak in the Stix *Cawston*
Steak in the Stix is a new steakhouse brasserie dedicated to showcasing Norfolk's finest produce. Ingredient-led, our menu is a journey of East Anglia's finest ingredients.
Eastgate, Cawston, NR10 4HA
t: 01603 879729

North Norfolk

The Bull Inn *Little Walsingham*
The Bull features a bar serving food all day, a shared lounge overlooking the old pump house and large rear courtyard with accommodation of 5 Ensuite rooms. All food is prepared to order using the freshest and natural ingredients, sourced from local suppliers.
8 Common Place, Walsingham, Norfolk NR22 6BP
t: 01328 820333

Crawfish Inn *Thursford*
A Victorian red-brick pub is an unlikely setting for a genuine Thai restaurant, but Siropas Rangphet and his wife have turned it into a special eating house.
Holt Road, Thursford NR21 0BJ
t: 01328 878313

Dales Country House *Upper Sheringham*
Our 2 AA rosetted restaurant is named after the local lords of the manor who would certainly have been welcome guests at The Dales in its heyday as a private house.
Lodge Hill, Upper Sheringham NR26 8TJ
t: 01263 824555

- 1. Broadland (pages 4-5)
- 2. Great Yarmouth (page 5)
- 3. Mid Norfolk (page 5)
- 4. North Norfolk (pages 5-6)
- 5. North West Norfolk (page 6-8)
- 6. Norwich (page 8)
- 7. South Norfolk (page 8-10)

 EatoutNorfolk.co.uk
MAP OF NORFOLK EATERY AREAS



Obrennans *Great Walsingham*
A family-run coffee house, restaurant, and café, we pride ourselves on our homemade products, including pies, quiche, sausage rolls, cakes and salads, and always a warm welcome.
Great Walsingham Barns, Great Walsingham NR22 6DR
t: 01328 822255

The Black Lion Hotel *Walsingham*
Offers an eclectic mix of original features and modern-day comfort in its bar, dining rooms and bedrooms. The food served is of the highest quality, prepared to order using the freshest, natural ingredients, all sourced locally from farmers, fishermen and traders.
Friday Market, Walsingham, Norfolk NR22 6DB
t: 01328 820235

The Gallow *Fakenham*
Offering a range of sport activities and also food and drink to enjoy throughout the day. A function room is also available for parties, weddings and other events.
Hempton Road, Fakenham NR21 7NY
t: 01328 862867

The Grove *Cromer*
Our en-suite rooms in the beautiful Georgian house, contemporary Orchard Rooms and six self-catering bungalows ensure we have something for everybody.
95 Overstrand, Cromer, Norfolk NR27 0DJ
t: 01263 512412

The Goat Inn *Skeyton*
A family run establishment with very pleasant staff and a team of chefs in the kitchen who produce local, homemade, cooked to order, fresh and delicious food.
Long Road, Skeyton NR10 5DH
t: 01692 538600

The Links Country Park Hotel *West Runton*
Proudly independent and well known for its imaginative menus, “The Links” is considered by many to be the best golf, leisure and conference hotel in North Norfolk.
West Runton, Cromer, Norfolk NR27 9QH
t: 01263 838383

The Saracens Head *Wolterton*
Well known for it's delicious style of cooking, using the best local produce, it sits in the middle of Norfolk fields, sheltered from the humdrum of everyday life.
Wall Road, Wolterton, Erpingham NR11 7LZ
t: 01263 768909

Taste of India *Holt*
Tandoori restaurant and takeaway, enjoy the finest Indian cuisine in Norfolk.
31 Bull Street, Holt NR25 6HP
t: 01263 711484

The Sea Marge *Overstrand*
4-star luxury set in this Edwardian Mansion, setting the mood for fantastic food and drink.
16 High Street, Overstrand NR27 0AB
t: 01263 579579

The Three Horseshoes *Briston*
Our menus change a little every day, and almost entirely every week, to accommodate the kitchen team's inspiration and desire to try out new flavours.
West End, Briston, Melton Constable NR24 2HY
t: 01263 862312

Thornham Deli *Thornham*
Focusing on locally-grown and sourced artisan produce, Thornham Deli showcases the very best that Norfolk has to offer in the Deli café.
High Street, Thornham PE36 6LX
t: 01485 512194

Wells Crab House Seafood Restaurant *Wells-next-the-Sea*
A small and intimate Seafood Restaurant with a monthly changing menu of dishes created from our chef's cuisine inspiration and creating our wonderful platters and salads from the stunning seafood we are lucky with on the coast with local seafood from family generation fisherman.
38 – 40 Freeman Street, Wells-next-the-Sea, Norfolk NR23 1BA
t: 01328 710456

The White Horse *Overstrand*
We are a great choice for your stay in North Norfolk. The eight stylish en-suite rooms, are well-equipped and comfortable and we offer a quality dining experience.
34 High Street, Overstrand, Cromer NR27 0AB
t: 01263 579237

North-West Norfolk

Congham Hall Hotel *Grimston*
Congham Hall, is an elegant Georgian manor and is one of the finest country house hotels in Norfolk with an award-winning restaurant
Grimston, King's Lynn PE32 1AH *t: 01485 600250*

Heacham Manor Hotel *Heacham*
A beautifully restored 17th century country house hotel on the North Norfolk coast. Nestled amidst our beautiful gardens, our rooms and suites offer an indulgent escape. Our award-winning restaurant is a real delight to enjoy Norfolk's incredible produce.
Humstanton Rd, Heacham, Kings Lynn, Norfolk PE31 7JX
t: 01485 536030



A warm welcome is guaranteed at our magical waterfront location, overlooking the beautiful Ormesby Broad.

Traditional pub dining with some tasty chefs specials. Eat, drink, relax and enjoy The Boathouse.
Booking advisable tel: 01493 730342

www.theboathouseormesbybroad.co.uk

The King William IV Country Inn and Restaurant

Award-winning Country Inn serving quality, local food including daily specials, A la Carte, vegetarian and children's dishes. Luxury en suite rooms.

*Heacham Road, Sedgford, Hunstanton PE36 5LU
t: 01485 571765*

The Nelson Country Inn *Burnham Market*

Superb drink, food and accommodation, set in the heart of Burnham Market, on North Norfolk's beautiful coast. All our food is sourced locally by our trusted suppliers.

*Creake Road, Burnham Market PE31 8EN
t: 01328 738321*

The Three Horseshoes *Roydon*

A small country pub in the heart of the village of Roydon, just a few miles from Kings Lynn and The Sandringham Estate. Serving real ales and traditional home-made pub food!

*148 Lynn Road, Roydon, Kings Lynn, Norfolk PE32 1AQ
t: 01485 600666*

Norwich

Barnham Broom *Barnham Broom*

Be it a romantic meal for 2, a business meeting, or conference, or you fancy something to revive yourself after a game of golf – we have what you need.

*Honingham Road, Barnham Broom NR9 4DD
t: 01603 759393*

Delia's Restaurant & Bar *Norwich*

Warm, friendly service and a relaxed atmosphere makes Delia's Restaurant and Bar in Norwich the perfect choice for celebrating the weekend.

*Norwich Football Ground, Carrow Road NR1 1JE
t: 01603 218705*

The Greyhound Inn *Hickling*

A traditional village pub for all seasons, we boast a roaring open fire and a sheltered smoking area for winter, and for summer a sun trap front terrace.

*The Green, Hickling, Norwich, NR12 0YA
t: 01692 598306*

Unthank Arms *Norwich*

A traditional Victorian local with a lively bar serving real ales, premium lagers and over 40 wines. An extensive menu with classic dishes and great value daily specials.

*Newmarket Street, Norwich NR2 2DR
t: 01603 631557*

The White Pheasant *Lenwade*

Is a family run business, situated in the beautiful Norfolk countryside overlooking the River Wensum, and offers a warm welcome, and pride their selves on being a Norfolk only supplied business.

*Lenwade House Drive, Lenwade, Norwich NR9 5QP
t: 01603 863557*

Yalm *Norwich*

Housed in The Royal Arcade in central Norwich, one of the city's most iconic attractions, offering a new experience for all-day dining and drinking. It's the perfect city centre spot to come and yalm with friends.

*23 – 24 Royal Arcade, Castle Street, Norwich NR2 1NQ
t: 01603 394377*

Yellows Bar & Grill *Norwich*

Spacious modern bar with exposed brick and stripped floors, serving the best in home cooked meals.

*Norwich City Football Club, Carrow Road NR1 1JE
t: 01603 218209*

South Norfolk

Elveden Inn *Elveden*

Eleveden Inn is a family friendly Free House, serving wholesome food and providing cozy accommodation.

*Brandon Road, Elveden, Thetford IP24 3TP
t: 01842 890876*

Elveden Estate *Elveden*

Our AA* Rosette restaurant offers delicious home-cooked food, locally sourced wherever possible.

*London Road, Elveden, Thetford IP24 3TQ
t: 01842 898068*

Fox and Hounds *Great Moulton*

From our small (but perfectly formed) kitchen comes well-cooked food - from curries to full English breakfasts. A full range of food to suit most palettes.

*Frith Way, Great Moulton, Norwich NR15 2HE
t: 01379 677506*

The Gull Inn *Framingham Pigot*

This freehouse and restaurant offers a wide range of traditional English and European favourites created from locally sourced produce.

*Loddon Rd, Framingham Pigot, Norwich, NR14 7PL
t: 01508 492039*

Guinness Arms *Icklingham, Suffolk*

Relax with a drink at the bar and enjoy delicious, locally sourced food, before staying the night in one of the Guinness Arms' individually designed bedrooms.

*The Street, Icklingham, Suffolk IP28 6PS
t: 01638 597547*



Shaun and Kim welcome you to Obrennan's.

We are a family run coffee house, restaurant, and café, with a warm and hospitable atmosphere, serving the best coffee in the area and we pride ourselves on our homemade products, including pies, quiche, sausage rolls, cakes and salads.

We take great care to make sure every one of our customers feels welcome and satisfied, serving beautifully cooked meals, desserts, and snacks all day.

Breakfast and lunch: Tuesday to Sunday 8am – 4pm

Sunday lunch: Noon – 4pm

We are dog friendly, rambler friendly and cyclist friendly. Indeed, we are a UK Cycling Pit Stop, offering a place for cyclists to service their bikes, recharge, and watch the world go by in the beautiful picturesque village of Great Walsingham.

Visit our website to view our menus online today!

**01328 822 255 · INFO@BRENNANS.CO.UK
GREAT WALSINGHAM BARNs · GREAT WALSINGHAM
NORTH NORFOLK · NR22 6DR**

The Kings Head Bawburgh *Bawburgh*
17th century inn with a traditional feel with inglenook
fireplaces, woodburners and low beamed ceilings.
Fresh food carefully prepared and beautifully cooked.
Harts Lane, Bawburgh, Norwich NR9 3LS
t: 01603 744977

The Marlingford Bell *Marlingford*
Is a charming rural pub just outside Norwich, with a
large welcoming restaurant, family friendly and always
a warm welcome awaits you.
Bawburgh Road, Marlingford, Norfolk NR9 5HX
t: 01603 880263

The Necton Windmill *Swaffham*
The Necton Windmill is a traditional family run village
pub, incorporating a modern first class restaurant. We
offer real ales, lagers, ciders, and an extensive wine list.
15-17 Mill Street, Necton, Swaffham PE37 8EN
t: 01760 722 057

Netherton Steakhouse *Long Stratton*
Kevin and his team continuously work hard to provide
a good quality, reasonably priced, dining experience, and
are proud to have been awarded "Best Family Dining
Experience 2018" by South Norfolk Council
The Street, Long Stratton, Norwich NR15 2XG
t: 01508 531500

The Swan *Loddon*
A modern pub with an authentic country feel and a
warm and welcoming atmosphere. Offering great food,
a fantastic selection of ales and lagers and lots more
besides.
Church Plain, Loddon NR14 6LX
t: 01508 528039

The Countryman *Tasburgh*
Visit us for a wide range of dining experiences or just pop in
for a drink or two, or a game of pool. We offer a variety of
fine ales, beers, wines and spirits.
Ipswich Road, Tasburgh NR15 1NS
t: 01508 470946

Wheatacre White Lion *Beccles*
Restaurant and free house, with a spacious oak-floored
dining area, a log fire and disabled friendly. Offering a
selection of real ales and locally sourced produce.
White Lion Road, Wheatacre, Beccles, NR34 0AT
t: 01502 677388



*where the views are as
good as the food...*

Filby Bridge Restaurant

We offer a fabulous
a la carte menu with a
superb variety of fresh fish plus
an excellent lunchtime menu
and superb coffee & cakes.

*You just need to visit
us to experience great food!*

Main Road, Filby, Gt. Yarmouth NR29 3AA

Tel: 01493 368142

www.filbybridgerestaurant.com

FREE 



**Located in rural Norfolk, The Old Rectory offers
the perfect setting for that special meal.**

Open for Sunday Lunches and evening dining in our beautiful conservatory restaurant.

Private dining facilities for all occasions also available.

Wedding, Birthday, Anniversary, Funeral Wake, Christmas Parties and more.

Open 7 days a week for functions. Tables available in restaurant 6.30 – 8.30pm.

Please call to book in advance.

Outdoor dining available.



North Walsham Road, Crostwick, Norwich NR12 7BG

01603 738513 info@oldrectorycrostwick.com

www.oldrectorycrostwick.com



TO BOOK CALL
01485 536010

The Fountain Sports Bar

Open to all!

FOOD SERVICE: Sunday to Thursday - 10am to 7.45pm, Friday & Saturday - 10am to 8pm
BAR OPENING: Sunday to Thursday - 9am to 8pm, Friday & Saturday - 9am to late.

<https://www.facebook.com/FountainSportsBar/>



Dinner
something for everyone

Lunch

Special Events

Sunday Carvery

FOR MORE INFO
SCAN QR CODE



EAT • DRINK • WATCH

The Fountain Sports Bar & Restaurant,

Searles Country Park, South Beach Road, Hunstanton, Norfolk PE36 6BB T: 01485 536010

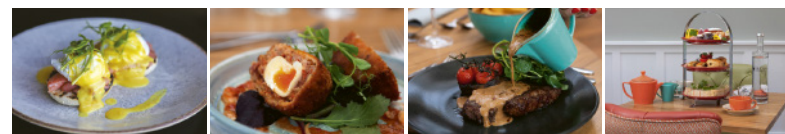


HOTEL • RESTAURANT • GOLF

**HEACHAM
MANOR**

Welcome to Heacham Manor Hotel situated within beautiful grounds and surrounding 18-hole Golf Course.

Enjoy Norfolk dining with casual brasserie fayre served in the Pavilion and fine dining and afternoon tea served in the Mulberry Restaurant.



BREAKFAST | LUNCH | DINNER | SUNDAY LUNCH | AFTERNOON TEA

Please scan the QR code or visit: www.heacham-manor.co.uk
or Simply Call: 01485 536030



HEACHAM MANOR HOTEL, HUNSTANTON ROAD, HEACHAM, NORFOLK PE31 7JX



£50 OFF
ALL ORDERS
OVER £250

**norwich
sunblinds**

01953 544015
www.norwichsunblinds.co.uk
Valid until 31/05/2023. T&Cs apply.



Tim and Koi offer a warm welcome at The New Forge, Aylsham, a restaurant of English and Thai Fusion.

Situated just a few miles north from Norwich Airport on the A140 (just before you reach the historic market town of Aylsham on the River Bure) next to Aylsham Garden Centre.

Serving freshly prepared Thai and English food 6 days a week, the extensive menus cater for all ages and palates. Booking is always recommended as despite being able to seat over 130 people we do fill up quickly during peak periods – however, we will always try to find you a table as soon as possible if you don't have a booking during these times.

On warmer days, our covered patio area and our extensive garden offer additional seating for that relaxing outdoor experience, and our refurbished children's play area now has a safety fence and additional play equipment.

Sunday Carvery
from 12 noon - 3pm
Adults £10.95 Children £7.50

Open 6 days a week – 12:00 - 23:00
Food served: Tues – Sat: 12:00 – 14:30 17:00 - 20:30
Sun: 12:00 – 20:00

Closed on Mondays except Bank Holidays

Norwich Road, Aylsham, Norwich NR11 6UD
Tel: 01263 734275 www.thenewforge.co.uk



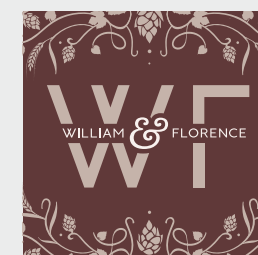
Newmarket Street,
01603 631557



Bishopsgate
01603 629417



Grove Road
01603 628466



Unthank Road,
01603 660706



Wensum Street
01603 633122

De'Ath
Hospitality

For more information
Nick or Briony De'Ath

hello@nwbdhospitality

The Big Skies



The Wiveton Bell

The Wiveton Bell is situated just a mile from the coastal village of Blakeney, and a short drive from the bustling market town of Holt.

Hugely popular with both locals and tourists, the pub has built a reputation for its award winning food, served in a relaxed and friendly setting. On the menu you can expect to find pub classics, complemented by regularly changing dishes from nearby farms and estates, plus local fish and seafood from the coast.

With six boutique bedrooms overlooking the village green (some which are dog-friendly) and a pretty garden terrace in the warmer months, The Wiveton Bell is a must-visit if you are in the area!

The Feathers

The Feathers is a cosy country haven, that has been a firm favourite for centuries, situated in the middle of Holt's bustling high street.



Stepping through The Feathers welcoming front door into the historic bar, its long tradition of warm hospitality immediately scoops you up and finds you a comfortable chair - and the perfect table. Locals and travellers hunker down in quiet, stylish interiors in front of blazing log fires in winter, sociable outdoor terrace tables in Summer. With 14 ensuite bedrooms at the pub and another 15 large bedrooms at The Lawns Rooms, just a four-minute walk away, The Feathers is an ideal dog-friendly location to enjoy all that North Norfolk has to offer.



The Globe Inn

Overlooking a pretty, leafy Georgian square the dog-friendly Globe Inn is perfectly placed for an adventure on the beautiful North Norfolk coast.

Newly refurbished and inspired by the town's maritime charm, the pub and dining room have been lovingly updated, with an eclectic mix of travel ephemera, walnut timbers and brass and antique lighting. Open for breakfast, lunch and dinner guests can settle in for food from The Globe Inn's seasonal menu, with locally sourced meals, that embrace the region's nautical heritage. The 19 on-site bedrooms provide a welcome retreat after a day on the coast and the addition of Arch House Rooms offer another 10 off-site spacious bedrooms and a self-contained cottage, all with private parking and just a short five-minute walk away.

YOU'LL LOVE
THE BIG SKIES
AND THE LITTLE DETAILS...

Our pubs with rooms all have a strong sense of place.

Menus inspired by season and ingredients the area has to offer, interiors brimming with atmosphere, stylish details and thoughtful touches.

Sun filled terraces and gardens perfectly pitched to deliver our Chestnut outdoor hospitality.

Time to linger? Book a room. There's plenty to choose from - coastal, country and market town locations, perfectly placed for a wander and an explore.

We look forward to welcoming you soon, just get in touch so we know when to expect you!

CHESTNUT

THE PACKHORSE
MOULTON
thepackhorseinn.com

THE RUPERT BROOKE
GRANTCHESTER
therupertbrooke.com

THE NORTHGATE
BURY ST EDMUNDS
thenorthgate.com

THE THREE BLACKBIRDS
WOODDITTON
threeblackbirds.co.uk

THE BLACK LION
LONG MELFORD
theblacklionlongmelford.com

THE WESTLETON CROWN
WESTLETON
westletoncrown.co.uk

THE SHIP
DUNWICH
shipatdunwich.co.uk

THE EIGHT BELLS
SAFFRON WALDEN
theeightbellsaffronwalden.com

THE WEEPING WILLOW
BARROW
theweepingwillow.co.uk

THE CROWN
STOKE BY NAYLAND
crowninn.net

THE GLOBE INN
WELLS-NEXT-THE-SEA
theglobeatwells.co.uk

THE CRICKETERS
CLAVERING
thecricketers.co.uk

THE FEATHERS
HOLT
thefeathersholt.com

THE CARPENTERS ARMS
GREAT WILBRAHAM
carpentersarmswilbraham.co.uk

THE MALTINGS
HOLT
themaltingsweybourne.com

THE WIVETON BELL
WIVETON
www.wivetonbell.co.uk

chestnutgroup.co.uk

@ChestnutCraftedHospitality



REEDHAM FERRY



Located next to the River Yare in the heart of the Norfolk Broads.

The Reedham Ferry Inn is a family run business which was established in 1949 by the Archers. Regardless of whether its lunch or supper, looking out at our idyllic riverside views, the last working chain ferry in East Anglia in operation or simply taking in the ambient history, our seasonal menus, well-kept local ales and extraordinary atmosphere are yours to enjoy.

As always our food is lovingly prepared by the team using quality, local, produce. We can cater for all types of party, for groups up to 30 people. Please get in touch with your requirements; we would be delighted to hear from you!

For opening times please see our website:
www.reedhamferry.co.uk



Reedham Ferry Inn, Ferry Road, Reedham NR13 3HA 01493 700429
twitter.com/reedhamferry facebook.com/reedhamferryinn
instagram.com/reedhamferryinn pub

THRIGBY WILDLIFE GARDENS



**OPEN ALL YEAR
ROUND**



**Book in
advance
online**

**to get discounted
tickets**

www@thrigbyhall.com

**THRIGBY HALL FILBY GREAT YARMOUTH
NR29 3DR**

☎ 01493 369477

www.thrigbyhall.com



**The place
to visit**

Hub of the village



Sitting on the edge of the village green and alongside the River Bure, The King's Head, known for its high-quality food, has just been reopened.

Brothers, Will and Sam Huetson, with friend Dave Potter, who are all local to the area and regularly visited the pub, decided to take it on after conversations with friend and previous owners.

There will be a continued focus on the food, with a gastro-pub theme, local produce and seasonal menus changing quarterly.

"We want to make it special and keep the reputation it has, give it a lift and some new energy. The pub has been refurbished throughout, redecorated with new furniture and finishings and given the outdoor area a proper pub feel,

rather than like you are sitting in a car park. Being local, we know what locals want, so let's make our

pub the hub of the village and try to make it appeal to everyone – all ages, groups, children and dogs."



FOOD | ROOMS | GARDEN



Kitchen Hours:

Mon-Sat: 8-10.30 | 12-4 | 5-8

Sunday: 8-10.30 | 12-4 | 5-7

01603 737426 | info@huetterinns.co.uk

26 Wroxham Road, Norwich, NR12 7EA, United Kingdom

Editorial by: Kings Head Coltishall 01603 737426 info@huetterinns.co.uk

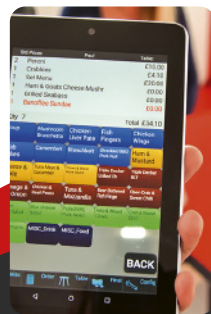


Starting From
£35
A Month

GET DOWN TO BUSINESS!

With systems you can count on...

- A complete system tailored to your business.
- Delivered and installed with full training by our professional engineers
- Out of hours phone and email support included
- Software updates for your existing hardware
- No hidden extra costs



ECR
EASTERN CASH REGISTERS
Est. 1975 Touch Screens & Epos Systems

ecr@ecr-tech.co.uk | 01603 610559

CROMER Pier TIDES BISTRO



Dine above the
waves in the sunshine



Don't take a chance, book your table
cromerpier.co.uk
or call 01263 511236

Cromer Pier, Cromer NR27 9HE

f @tidesbistro © Tripadvisor Tides Bistro

Hitting the heights in Norfolk

‘It’s flat isn’t it.’ That is the common response to anyone who has not visited Norfolk.

And yes, there are parts of the county that are very flat. The Fens of West Norfolk; the Broads in east Norfolk and parts of the Brecklands are very, very flat.



Norfolk Broads

However, there are also places where the countryside rolls out in front of you in a wide swath of undulating hills. During the spring and summer, the patchwork patterns of fields of barley, wheat and oilseed rape, interspersed with the beautiful wild flower margins, give a wonderful panorama that would excite any modern Impressionist painter.

Cyclists visiting the county will happily regale you with tales of long, unrelenting hills that may not reach the dizzy heights of Cumbria or Yorkshire, but they still test the lungs and leg muscles to the max.

And then you have the man-made structures. The quite often magnificent castles, towers and churches all offer unparalleled views across the countryside or over the pretty market towns and villages.

One other type of structure gives the county height and character and that is the iconic lighthouse. Around our coastline there are a number of lighthouses that have served as both a welcome and a warning to sea-faring visitors.

Starting in the west of the county, our Norfolk Lighthouse trail begins in Old Hunstanton. The first lighthouse was built in 1665 and was constructed using

wood, with an iron basket of coals providing the light. The current brick built cylindrical tower and balcony that reaches two stories into the sky was erected in 1840 and remains an iconic landmark in the seaside town to this day.

Cromer Lighthouse sits proudly on Cromer Ridge, offering navigational guidance to passing ships. The tower is 18 metres high and the light is 84 metres above sea level. The lighthouse, which also offers holiday accommodation in its keeper’s cottage, is now automated and controlled from a centre in Essex, but for nearly 200 years it has been a safety measure for ships and boats.

The most recognisable lighthouse in Norfolk is the Happisburgh Lighthouse. Its red and white striped tower is the oldest working lighthouse in East Anglia and is the only independently-run lighthouse in the UK. The Lighthouse is funded and maintained through voluntary contributions and its light continues to shine with a range of 18 miles. The Happisburgh Lighthouse dates back to 1790 and visitors can take a look around, including mounting the 112 steps to the lantern, at various times of the year (check the website for details: www.happisburgh.org.uk/lighthouse).



Happisburgh Lighthouse

If lighthouses fail to rock your boat – excuse the pun – then you can get your fill of heights by visiting some of the magnificent castles that can be found scattered across Norfolk.

For sheer skyline domination, then Norwich Castle is the place to go. Built 900 years ago by William the Conqueror, the castle that towers over Norfolk’s only city is still in remarkably good shape. The castle houses a fantastic museum and art collection and has dungeons and battlements to stir the imagination.

On a smaller scale but nonetheless an impressive sight is the 12th century construct at Castle Rising. The castle was built in 1138 and became the residency for the exiled Queen Isabella in the 14th century. Isabella is rumoured to have murdered her husband Edward II, and was sent to live in isolated luxury in Norfolk as a result.

Pre-dating the Normans, Burgh Castle was built by the Romans as a first line of defence against the marauding Saxons. Three of the castle’s four walls are still standing, while the fourth has slipped into Breydon Water.

Baconthorpe Castle is a 15th century manor house built for the Heydon family – once a prominent Norfolk family. From the 15th to the 17th century the castle was enlarged and extended before the family’s fortunes fell and the castle was abandoned. The strong inner gatehouse was thought to be built in preparation for the War of the Roses. Later additions, such as the Elizabethan style outer gateway were built in more peaceful times.

Castle Acre is a quiet village just outside Swaffham, however its wealthy past is revealed by the castle and priory that sit at either end of the village. The village itself is a complete Norman planned settlement, the work of a baronial family, the Warennes, during the 11th and 12th centuries.



Norwich Castle

The Priory is mostly ruined but well worth a visit anyway. The west end gable, the monks’ lodgings and the remains of many of the buildings around the cloisters can still be seen. The herb garden has been recreated to grow many of the herbs the monks would have grown back in the 13th century.

The Norman ruins of Castle Acre Castle, founded soon after the Battle of Hastings by the first William de Warenne, a close associate of William the Conqueror, are a superb and well-preserved example of a motte and bailey castle, and remain one of the most impressive Norman earthworks in the country. Walk along its ramparts and you will get glorious views across the rolling countryside.

So while our county may have its flat areas, it is definitely worth taking the time to seek out some of these iconic buildings to give you both a different perspective and a sense of history.



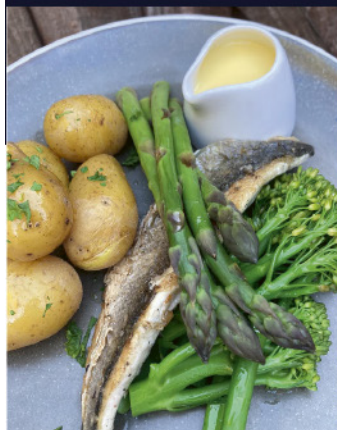
Castle Acre Priory



THE BELL AT MARLINGFORD

01603 880263

www.thebellatmarlingford.co.uk



North Norfolk's Favourite Destination Dining Restaurants

In2Blu at The Links, West Runton



links-hotel.co.uk

01263 838383

Upchers at The Dales, Upper Sheringham



thedalesscountryhouse.co.uk

01263 824555

Frazers at The Sea Marge, Overstrand



seamargehotel.co.uk

01263 579579

Dining out this Summer at The Fox Steakhouse

Situated midway between Norwich Airport and the market town of Aylsham on the A140 Cromer road, The Fox Steakhouse at Hevingham is fast growing a reputation for its family friendly dining and unique dishes. Their home smoked meats and lovingly crafted burgers are becoming a 'must try' throughout the area along with some of the best steaks around, The Fox Steakhouse is well worth a visit. So if you are stopping off on your way to or from the Norfolk coast for a casual drink to sample some of the locally produced gin or 'Cask Marque' approved ale, grabbing a light lunch or that special evening out, be sure to give them a try.



The large beer garden is always a popular spot through the summer months with ample seating and a play area for the little ones. Keep an eye out for their charity BBQ and live music event on August bank holiday Sunday.

The Fox Steakhouse, Cromer Rd, Hevingham, Norfolk, NR10 5LY

Editorial by: The Fox Steakhouse Tel: 01603 755362 www.thefoxsteakhouse.co.uk



Award winning, steakhouse
style dining in Norfolk.

Contemporary and classic dishes from
flame grilled burgers and local steaks
to hand stretched pizza, skewers,
home smoked meats, fish and vegan.

Large beer garden for al-fresco dining, kids play area,
real ale, craft beer, fine wines and local gin.

Look out for our August Bank Holiday Sunday
'Band & BBQ' live music event.



Thefoxsteakhouse.co.uk

01603 755362



The Fox Steakhouse,
Cromer Rd,
Hevingham, Norfolk,
NR10 5LY



GASTROPUB & LUXURY B&B

40 years of The Kings Head

Owned by the Wimmer family since 1983, this year marks 40 wonderful years as a leading gastropub in Norfolk. Throughout 2023 you can enjoy a fun packed year of celebratory events, join us and help raise money for some incredible charities!

Find full event details including the big 40th beer festival in August at kingsheadbawburgh.co.uk

Open Tuesday to Sunday - breakfast to dinner.

The Kings Head offer a temptingly tasty seasonal and 48.5 mile special menu. The 48.5 mile is created using produce from suppliers within this distance, incredibly fresh, delicious dishes that help reduce our carbon footprint.



2 AA Rosettes



4 AA Gold Stars



2023 Pub Of The Year
Finalist - East Of England
Tourism Awards

Kings Head Kiosk

Open set dates throughout the summer offering handmade 'top your own' pizzas. Keep an eye on social media for more details...

Private Hire Available

Host your corporate or private event in our alfresco area and garden - enjoy seafood platters, a bbq, pizza & more!



hello@kingsheadbawburgh.co.uk
01603 744977
Harts Lane, NR9 3LS



SARACEN'S HEAD

MIDDLE OF NOWHERE, CENTRE OF EVERYWHERE

A Georgian Inn nestling in the heart of the North Norfolk countryside, providing a unique place to eat, drink and stay.

Unwind with a drink and enjoy a delicious meal prepared by our chefs, using the best local produce.



Open Wednesday to Sunday for lunch and dinner.

Wednesday to Saturday Lunch
orders from 12.00pm to 2.00pm.

Dinner from 6.30pm to 8.30pm.

Sunday lunch only,
orders from 12.30pm to 2.30pm.

come and find us!



t: 01263 768909 e: info@saracenshead-norfolk.co.uk www.saracenshead-norfolk.co.uk

The Saracen's Head, Wolterton, Norfolk NR11 7LZ



Norfolk – we have you covered!



The Norfolk Agents have over 50 years combined experience selling and renting property across Norfolk. We have seen first-hand how buying habits have shifted away from the High Street, establishing a more cost-effective solution for sellers and landlords began to seem like an obvious move.

When we launched in 2016, there were already a growing number of online only agencies trading; however, they didn't seem to be making much of an impact on the local market. The financial saving was a real appeal but there were doubts over customer service and not having a personal relationship with the agent during such an important time. This led us on to thinking, what if we could offer an alternative which brought together the most important parts of a traditional High Street service at a cost which compared with the online only agencies? Surely that would be a winning formula!

It was clear that sellers wanted a choice of how they wanted to work with us; whether on a fixed price basis which is payable at the start of the process and is the same regardless of the property value, or on a more traditional 'no sale/no fee' arrangement, with the commission based on a percentage of the sale price.

We have also introduced a Split Fee package which offers a bit of both for those who can't quite make up their mind.

We have also completed our sales offering with competitive and fixed fees for our rental offering which includes the opportunity to rent with us for £750+vat no matter the value of your property.

We also wanted to offer complete transparency around our charges. When we asked people what they found off-putting about other estate agents, it was how they often struggled to get a clear answer on fees and were concerned about hidden costs. Therefore, we print our full choice of fee packages on all of our marketing literature, so our clients know exactly where they stand from the minute we meet.

None of our packages tie our clients into lengthy sole agency contracts. Why would any company who had the confidence and belief in what they offer ask their clients to commit to exclusive terms for 15-20 weeks, or sometimes even longer? We believe that while our clients are happy with what we are doing, they will be loyal to us.

We haven't tried to reinvent the wheel; in fact, our core values are as traditional as they come, based on hard work and doing the right thing by our clients. We just want to give people the opportunity to get great value for money whilst receiving a fantastic service.

If you are thinking of selling or renting your property please feel free to give us a call or visit our website to see our range of fees and services.



Editorial by: The Norfolk Agents Tel: 0808 1689 134 www.thenorfolkagents.co.uk

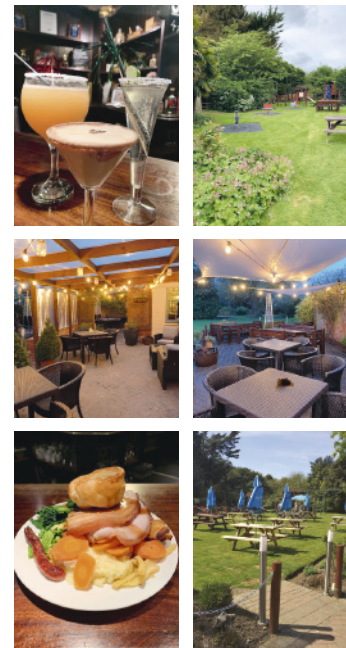
S



The Swan Freehouse pub and restaurant with rooms is a must try, if you're into local ales, good food and fine wine, which all comes with a warm welcome from our front of house team.

Menus created using only the best ingredients from local farmers, fishermen and artisan producers.

The Swan, Church Plain, Loddon NR14 6LX
01508 528039 www.theloddonswan.co.uk



The Worlds End MULBARTON

Open 7 days for lunch and evening meals
Enjoy our Sunday Roast or our
Steak Night on Thursdays
Friday night is curry night.

01508 570205
Norwich Road, Mulbarton,
Norwich NR14 8JT
theworldsendpub69@aol.com
www.theworldsendpub.co.uk



The gardens of The Grove have been providing fruit and veg for the kitchens since The Gravelings took over in 1936, but this year we've upped the anti, by increasing our garden team and easing some of the burden that, until this point, lay solely on the shoulders of John Graveling, now 86.

The results have been magnificent. The glasshouse, polly tunnel and veg beds are full. By the end of June we will be providing our a la carte kitchen and Sundown with, spring cabbage, coriander, potatoes, basil, courgettes, nasturtiums, patty pans, violas, French beans, oregano, mint, fennel, lemon balm, celery, borage, chantenay carrots, calendula, sugar snaps, parsley, baby turnips, chives, mange toute, salad leaves, rainbow chard, micro-herbs, radishes, pea shoots, tomatoes, cucumbers, sorrel and broad beans. Yes, that's all by the end of June.

Our chefs have literally got vegetables coming out of their ears, well hopefully not literally.

In terms of food miles, we are talking about 0.06 food miles for the a la carte menu and 0.01 food miles for

Sundown, making that the lowest food miles in ... the world? Whether that is arguable or not, without any exaggeration, you can't get fresher; the food is picked on the day that it is served and is not grown with pesticides or chemical fertilizers, just a high fence to keep the muntjacs out of the courgettes. And we can't be too hard on the wildlife, after all, the pigeons and pheasants have were here long before 1936.



A LA CARTE DINING IN THE MAIN HOUSE
OR TAPAS AND PIZZA IN SUNDOWN
THE GROVE CROMER OFFERS FRESH FOOD
COOKED WELL FOR ALL TASTES AND AGES



A quaint, classy bar in the heart of Aylsham

M's of Aylsham opened in February 2022. Emma Payne, the owner, has a history of working in the hospitality sector and wanted to create a friendly, classic cocktail bar atmosphere in this wonderful Grade II listed building. Bringing a quaint, classy bar to the heart of Aylsham and showcases what Norfolk has to offer.

The Cocktail and Tapas Bar serves Norfolk Beers, Lagers and Wines with a classic cocktail menu, using fresh produce as much local as possible. Our Tapas menu caters for all, including vegetarian, gluten free and dairy free, offering classic Tapas dishes from Beef Meatballs, Patatas Bravas to Seafood sharing boards and Tiger Prawns pan fried in Garlic and Chilli.

We are very proud of the Cocktails we serve, they are all handmade in front of you using quality ingredients. We have an extensive cocktail list for you to choose from and our mixologists love getting creative using Norfolk spirits and ingredients!

Alongside the Cocktail Bar at "M's" we offer a Fish Deli providing seasonal and sustainable wetfish, shellfish and smoked fish along with condiments including, fish soups, caviar, herring and relishes for you to purchase and enjoy at home.

M's local Fishermen from Lowestoft and Cromer provide fresh produce including, Sea Bass, Cod, Haddock, Smoked Haddock, Scallops, Salmon, King Prawns, Crayfish Tails, Smoked Mackerel, Hot Roast

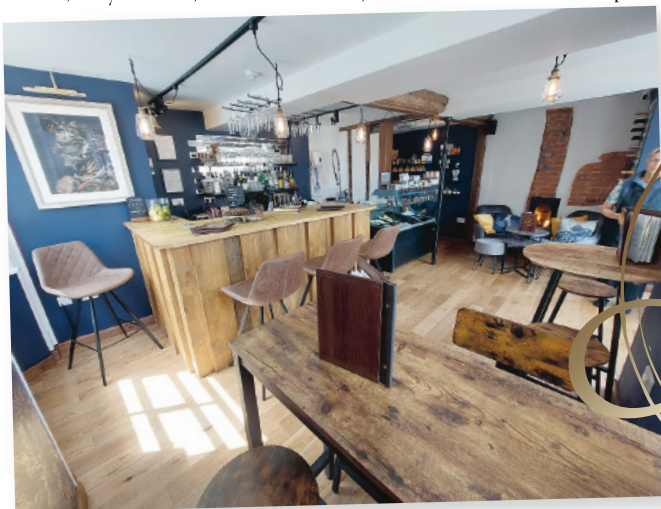


Smoked Salmon and of course Cromer Crab!

"M's" prides itself in working with local producers from Butchers and Greengrocers in Aylsham to Norfolk Vineyards and Breweries to offer you the best, local quality and to really shout about what Norfolk has to offer.

We cater for private parties and offer exclusive, specialist evenings including Wine Tasting events and themed parties.

1 Red Lion Street, Aylsham, Norwich,
NR11 6ER



Editorial by: M's of Aylsham Tel: 07778 546825 www.mssofaylsham.co.uk



THE WHITE HORSE UPTON

Community-owned since 2012, the White Horse is a traditional country pub serving home-cooked food with a good selection of real ales and friendly service.

Its rural location is ideal as a start or end point for country and riverside walks and the large garden at the rear is family and dog-friendly with covered seating to accommodate all aspects of the British weather! The pub is a 15-minute walk from the moorings at Upton Staithe.

The rear of the car park is available for 'Brit-stoppers' and the White Horse welcomes both national and international visitors.

Next door to the pub is Upton Community Shop, open 7 days a week from 8.00 a.m. to 6.00 p.m., selling everyday essentials and so much more. Part of the White Horse Development Trust, the shop is staffed for the majority of its opening hours by volunteers.

17 Chapel Road, Upton, NR13 6BT
Follow on Facebook: [whitehorseupton](https://www.facebook.com/whitehorseupton)
Telephone: 01493 750696
Email: whitehorseupton@gmail.com
Website: www.whitehorseupton.com



delia's

RESTAURANT AND BAR



Open Friday & Saturday nights
Delia's Restaurant and Bar is one of Norwich's best kept secrets! A beautiful restaurant where you are guaranteed great food, a warm welcome and excellent service.



Book a table now

YELLOWS

Bar & Grill



Open Wednesday 5pm-11pm
& Thursday - Saturday 11am-11pm

Yellows is a friendly neighbourhood restaurant. The best burger and ribs in the city, along with eclectic additions featuring tastes of Italy, Spain and the Far East.

The Rose and Crown Frettenham

A traditional family friendly free house local pub in the quaint village of Frettenham.

Cask conditioned real ales, beautiful beer garden and coffee shop, serving homemade sausage rolls and a great selection of home baked cakes, perfect with a cup of freshly ground coffee.

Traditional breakfasts using top quality ingredients from our breakfast menu Saturdays and Sundays 10am - 1pm.

Joy Thai Food Thursdays to Saturdays 4:30pm - 8:40pm.

Great street food to enjoy casual dining style with your favourite beverage.

Reputable live music venue hosting a calendar of acts. Keep up to date on our social media.

Opening Hours:

Wednesday: 12:00 - 23:30 | Thursday: 12:00 - 23:30

Friday: 12:00 - 23:30 | Saturday: 10:00 - 23:30

Sunday: 10:00 - 22:00
(Monday - Tuesday: Closed)



50 Buxton Rd, Frettenham, Norwich NR12 7NJ
01603 898341



Sew Simple



Norfolk's premier destination for a massive range of fabrics, needlework, art and craft supplies!



Open 7 Days a Week
Free Parking

Taverham Country Shopping Centre,
Fir Covert Road, Taverham, Norfolk NR8 6HT
Tel: 01603 262870
www.sewsimple-norfolk.co.uk



KEN'S

CORN STORES

EST. 1956

Large range of animal foods and accessories

Quality products

Friendly, knowledgeable staff

Advice on pet nutrition

Good, old-fashioned service

Competitive prices

first for feed and so much more

Taverham Country Shopping Centre,
Fir Covert Road, Taverham, Norfolk NR8 6HT
Tel: 01603 861370 www.kenscornstores.co.uk



Dining with nature or dishing up an at-home treat – Thornham Deli has it covered

There is actually nothing that soothes the soul and heightens the sense of being at one with the natural world more than a picnic.

Casting your picnic blanket on the grass or sand and revealing the tasty and tempting delights contained within your full-to-the-brim hamper is guaranteed to bring a smile to the faces of everyone joining your outdoor party.



At Thornham Deli, we cater for every occasion and a spot of al fresco dining is something we think we are particularly good at. But, we will let you be our judges.

Let's start with the surroundings. A soft, spacious picnic blanket is a must. It allows you to immerse yourself in your surroundings while keeping sand, grass and flower stalks from encroaching onto your plate. A foldable table adds an element of organisation as it is somewhere you can put glasses, bottles or wine chillers. At Thornham Deli we stock the Navigate range of picnic accessories, including blankets, plastic glassware and foldable tables.

Once the picnic stage is set, it is time for the big reveal.

And it is here that our deli counter reaches its own level of superstardom. Take your pick from our truly mouth-watering range of treats. All baked by our own

talented kitchen team, the counter is full of Scotch eggs, the perennial picnic favourite – sausage rolls, vegetarian quiches, cheeses, filled sandwiches, olives, and the most scrumptious choice of cakes and sweet treats.

To accompany the delicious deli treats, we also stock a fantastic range of local beers, soft drinks and both local and internationally renowned wine and champagne.

Keeping everything cool, even on the warmest

summer day is made easy with the Navigate cooling hampers, which are available from the Lifestyle section of Thornham Deli.

While an informal picnic on the beach with friends is the most perfect way to spend a summer's day or evening, there are times when you want to ramp it up a bit. Our outside catering service allows you to serve your friends and family with the very best that Thornham Deli's kitchen team can offer. Our catering service will enable you to be the host or hostess with the most without needing to do more than agree the menu. Creative dishes, prepared by some of the most talented chefs in the county and served with impeccable style to your guests. Home entertaining – you've nailed it!



Editorial by: **Thornham Deli** Tel: 01485 512194 www.thornhamdeli.co.uk



ELVEDEN COURTYARD



Take a pleasant walk around our nature trail followed by lunch in one of our restaurants, including our dog friendly restaurant and then enjoy a relaxed shopping experience in our farm & gift shop.

Free on-site parking.

Card Payment Only.

Open Thursday to Monday 10.00am – 4.00pm

Elveden Courtyard, London Road,
Elveden, Thetford, IP24 3TJ

01842 898068 estate.shop@elveden.com

The White Pheasant



Lenwade House Drive
Great Witchingham Norfolk NR9 5QP

Phone Number: 01603 863557
Email: thewhitepheasant@hotmail.com

The White Pheasant is a family run business. Sat in the beautiful Norfolk countryside overlooking the River Wensum, we offer a warm welcome and we pride ourselves on being completely Norfolk supplied and the fresh produce comes straight from the local fields and the adjoining farms.

Our chef and his team create a home cooked luxury menu that will cater for the whole family. And a changing seasonal special board to entice you to try the best that Norfolk can offer.

On Sundays you will find our carvery offering a variety of different meats and seasonal veg. Our restaurant has views over our lawned gardens or the beautiful running waters of the river Wensum. We have a fully stocked bar complete with local ales and sprits. Our friendly staff will go above and beyond to ensure you have a wonderful experience with us.



Elegant Edwardian character



Established in 1897, The Cliftonville stands proud on top of Cromer's iconic coastline. It boasts 30 newly refurbished bedrooms all with sea views, great dining spaces & function rooms throughout.

When entering, you are greeted with impressive Edwardian features, a highlight being the Westcliff restaurant, with its beautiful large stained glass window. You can also find relaxing lounge areas where dogs are welcomed, and from all dining spaces you can eat or drink whilst looking out to sea.

If you are looking for somewhere to eat on the North Norfolk coast then The Cliftonville has everything you need.

Taking inspiration from the local surroundings, they incorporate incredible local produce on their menus from the likes of Swannington Farm, who supply delicious meat, to Staithe Smokehouse who supply fresh smoked fish to use in their colourful summer dishes.

Dishes that stand out on their new Spring menu would be the Roasted Miso Aubergine on Israeli Couscous, Staithe Smokehouse Hot Smoked Salmon with Beetroot Salad and the Pan Seared Lamb Rump with leeks, peas, samphire and Jersey Royals.



If you are looking to feed the whole family, they have a great kids menu including all the classics like tomato pasta, burgers or a great fish and chips, plus your children will remain entertained with their bags of lego for the table or one of the board games tucked away in their lounge areas.

If you are interested in booking an event, The Cliftonville has some fantastic spaces to suit all party sizes. The Blogg Bar is backed by another beautiful stained glass feature, this space can be adapted to suit your event and just off of this room they have two more intimate dining rooms which can be booked for parties or corporate events.

For weddings and larger events, be sure to check out their new Ballroom space, with the potential to accommodate up to 80 seated and around 120 for stand up casual gatherings. The room includes its own private bar and a large projector screen set up if required. The Cliftonville would make a wonderful venue for a wedding, a stones throw from picturesque Norfolk beaches, with its comfortable bedrooms and fantastic food..

For all bookings or enquires just head to their website, www.thecliftonville.com, or get in touch with the reception team for further information – reservations@cliftonvillehotel.co.uk

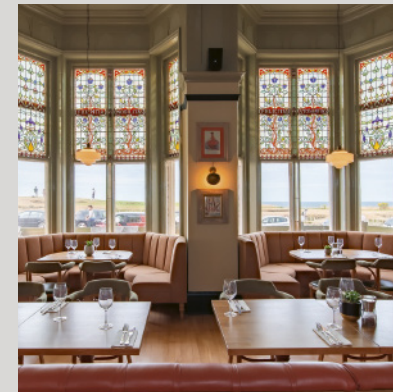
Editorial by: The Cliftonville Tel: 01263 512543 www.thecliftonville.com



SITTING ON TOP OF CROMER'S SPECTACULAR COASTLINE, THE CLIFTONVILLE OFFERS UNRIVALLED SEA VIEWS FROM EVERY ROOM.

WITH AN ELEGANT EDWARDIAN DINING ROOM, RELAXED LOUNGE OR FANTASTIC OUTSIDE TERRACE, YOU ARE NEVER SHORT OF GREAT DINING SPACES AT THE CLIFTONVILLE.

WE CREATE DISHES USING LOCAL PRODUCE WHERE POSSIBLE AND PRIDE OURSELVES ON A DELICIOUS MENU CATERING FOR ALL TASTES.



FOR ENQUIRES OR TABLE BOOKINGS JUST HEAD TO OUR WEBSITE
THECLIFTONVILLE.COM

29 RUNTON ROAD CROMER NORFOLK NR27 9AS | 01263 512543
RESERVATIONS@CLIFTONVILLEHOTEL.CO.UK

SENSATIONAL *Live Variety* ENTERTAINMENT

THE AWARD-WINNING

CROMER Pier

SHOW

1st July to 30th Sep

BOOK ONLINE
CROMERPIER.CO.UK
BOX OFFICE 01263 512495

10% off Code CB1

EST. 2010

Jay Jay's **The Beach** CAFE & BISTRO

ENJOY A STROLL
ALONG THE BEACH
AND ...

*Dine
by the Sea!*

Great food & Good times by the Sea!

The Beach Cafe & Bistro, Lower Esplanade, Gorleston-on-Sea Norfolk, NR31 6BT

01493 657001 | jayjaysatthebeach.com

f t i

OPEN ALL YEAR



The Waterside

Rollesby

**FREE
ADMISSION**

**OPEN 7 DAYS
A WEEK**

Delightful **waterfront café**, with **sun terrace**, nestling on the magical Trinity Broad serving **Brunch, Lunch & Afternoon Tea**



Café & Tearooms



Boat Tours



Wildlife Watch



Mini Herb Garden



Family Play Area

www.thewatersiderollesby.co.uk | 01493 740531

The Waterside Rollesby, Main Road, Rollesby, Norfolk NR29 5EF